

BALCONY FLOOR

- three layer felt covering or simply ply membran
- 18mm WPB ply set to fall
- 18mm WPB ply on timber joists with insulation
- 12mm timber board fixed to underside of joists
- 20mm timber boarding (as wall cladding) fixed to 50x50mm battens

WINDOWS

- energy efficient windows double or triple glazed u-value 0.8-1.6 max.
- stained timber sections - light grey
- 20mm thick timber surround board stained to match windows externally
- steel flashing over cill

WALL CONSTRUCTION 2

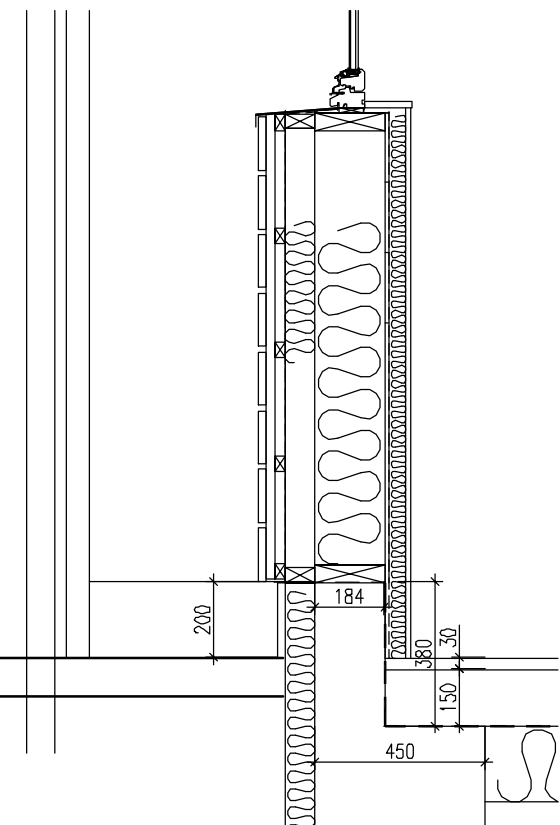
- timber cladding 140x20mm FSC or locally sourced
- timber battens and counterbattens 25x38mm
- breather membrane
- 80mm Difultherm external insulation between timber studs
- 184mm timber studs with insulation between studs
- internal lining board
- vapour control layer
- 44mm hemp insulation between battens
- 12mm ply as wall finish

GROUND FLOOR

- Recycled hardcore
- sand blinding
- 200mm expanded polystyrene
- Visqueen DPM (Visqueen 01993 77911) lapped over foundation upstand
- 150mm concrete floor slab
- 30mm polished screed as floor finish

FOUNDATIONS

- Concrete trench foundations 1200mm deep with 184mm wide upstand 200mm above grd lvl - level with slab at doors
- 80mm perimetre rigid zero ozone with depletion insulation thermal resistivity of 0.2W/mK
- render finish to insulation below dpc lvl



Rev A 29-07-06 Stud width amended

DRAWING			
SECTION THROUGH BALCONY AND WALL			
PROJECT			
REAR OF 47 ELM STREET			
SCALE	DATE	DRAWING NO.	REV.
1:20	28-11-05	ESLB - 34	A
SASSI CHAMBERLAIN ARCHITECTS			
14 VICARAGE ROAD, TEDDINGTON TW11 BEZ			
T 020 8977 4180 - F 020 8977 8355 - M 0078998166			